

**D-SERIES CRAWLER EXCAVATORS  
CX290D MATERIAL HANDLING /  
SCRAP LOADING**

**CASE**  
CONSTRUCTION



**TIER 4  
FINAL  
EU STAGE IV**

**IT'S TIME  
FOR MORE**

[www.casece.com](http://www.casece.com)  
**EXPERTS FOR THE REAL WORLD  
SINCE 1842**

# MAIN REASONS TO CHOOSE THE D-SERIES



## HIGH RELIABILITY

- Reliability and durability with the new redesigned arm, boom and undercarriage.
- Optional hydrostatic reversible fan to match the real cooling demand, reducing power absorption and reducing maintenance needs thanks to the reversing mode



## HIGH VERSATILITY

- A choice of booms and arms for both material handling and scrap loading applications provide superior reach and lifting capability.
- Material Handling version (MH): Purposely built and 5 m arm.
- Scrap Loading version (SL): reinforced straight boom and gooseneck arm.



## HIGH EFFICIENCY

- Energy saving system to take advantage of all fuel saving opportunities.
- High levels of AdBlue autonomy with large AdBlue tank and low additive consumption.



## TIER4 FINAL/STAGE IV ENGINE

- Selective Catalytic Reduction after-treatment system and Diesel Oxidation Catalyst.
- DPF-free solution saves time and maintenance costs, in addition to delivering a powerful and fuel efficient performance.



## PRODUCTIVITY

- Faster cycles thanks to improved hydraulic system.
- Faster arm open speed provides an advantage when tossing scrap over.
- Commanding view of the working area from a height of 5 meters.
- Rigid elevating structure to work at the most productive.
- Superior reach and lifting capacity, makes short work of moving all sorts of waste, logs, garbage and scrap.



## SAFE OPERATION

- New device prevents interference between the machine and its attachments through sensors on the bucket cylinder.
- Emergency cab lowering device operated hydraulically, further enhancing safety.
- Factory fitted travel alarm for greater safety on the jobsite around the machine.



## COMFORTABLE CAB

- Superior cab structure with ample legroom for the operator.
- Fully adjustable workstation.
- Improvements to the pilot circuit reduce front attachment shock at full stroke.
- Less shaky cab, better comfort and greater safety around the machine.



## BETTER VISIBILITY

- Standard rear and side camera for maximum visibility.
- New LED working light package, which is more than three times brighter than its halogen equivalent.

## ENGINE

Model \_\_\_\_\_ ISUZU AQ-4HK1X  
 Type \_\_\_\_\_ Water-cooled, 4-cycle diesel, 4-cylinder in line, High pressure common rail system (electric control), turbocharger with air cooled intercooler, SCR system.

Number of cylinders / Displacement (l) \_\_\_\_\_ 4 / 5.52  
 Emissions level \_\_\_\_\_ Tier 4 final / Eu stage IV  
 Bore & stroke (mm) \_\_\_\_\_ 115 x 125

### Rated flywheel horse power

SAE J1349, ISO 9249 \_\_\_\_\_ 132.1 kW / 177 hp at 2000 min<sup>-1</sup>  
 ISO 14396 \_\_\_\_\_ 140 kW / 188 hp at 2000 min<sup>-1</sup>

### Maximum torque

SAE J 1349, ISO 9249 \_\_\_\_\_ 621 N-m at 1800 min<sup>-1</sup>  
 ISO 14396 \_\_\_\_\_ 642 N-m at 1800 min<sup>-1</sup>

## HYDRAULIC SYSTEM

Main pumps \_\_\_\_\_ 2 variable displacement axial piston pumps with regulating system  
 Max. oil flow \_\_\_\_\_ 2 x 234 l/min at 2000 min<sup>-1</sup>

### Working circuit pressure

Boom/Arm/Bucket (MPa) \_\_\_\_\_ 34.3 - 37.3 with auto power boost  
 Swing circuit (MPa) \_\_\_\_\_ 27  
 Travel circuit (MPa) \_\_\_\_\_ 34.3

### Pilot pump

\_\_\_\_\_ 1 gear pump  
 Max. oil flow (l/min) \_\_\_\_\_ 20  
 Working circuit pressure (MPa) \_\_\_\_\_ 3.9

### Boom Cylinders

Bore (mm) \_\_\_\_\_ 140  
 Stroke (mm) \_\_\_\_\_ 1126

### Arm Cylinder (Dual cylinder)

Bore (mm) \_\_\_\_\_ 125  
 Stroke (mm) \_\_\_\_\_ 1280

### Bucket Cylinder (only CX290D Material Handling)

Bore (mm) \_\_\_\_\_ 120  
 Stroke (mm) \_\_\_\_\_ 1010

## SWING

Swing Motor \_\_\_\_\_ Fixed displacement axial piston motor  
 Maximum swing speed (min<sup>-1</sup>) \_\_\_\_\_ 6.5  
 Swing torque (Nm) \_\_\_\_\_ 69800

## FILTERS

Suction filter (µm) \_\_\_\_\_ 105  
 Return filter (µm) \_\_\_\_\_ 6  
 Pilot line filter (µm) \_\_\_\_\_ 8

## ELECTRICAL SYSTEM

Voltage (V) \_\_\_\_\_ 24  
 Alternator (Amp) \_\_\_\_\_ 50  
 Starter (kW) \_\_\_\_\_ 24 V 5.0  
 Battery \_\_\_\_\_ 2x12V 92 Ah/5 HR

## UNDERCARRIAGE

Travel motor \_\_\_\_\_ Variable displacement axial piston motor  
 High travel speed (Automatic travel speed shifting) (km/h) \_\_\_\_\_ 5.5  
 Low travel speed (km/h) \_\_\_\_\_ 3.5  
 Drawbar pull (KN) \_\_\_\_\_ 196  
 Number of carrier rollers (each side) \_\_\_\_\_ 2  
 Number of track rollers (each side) \_\_\_\_\_ 9  
 Number of shoes (each side) \_\_\_\_\_ 51  
 Type of shoes (MH/SL) \_\_\_\_\_ Triple grouser shoes / flat shoes  
 Gradeability \_\_\_\_\_ 70 % (35°)

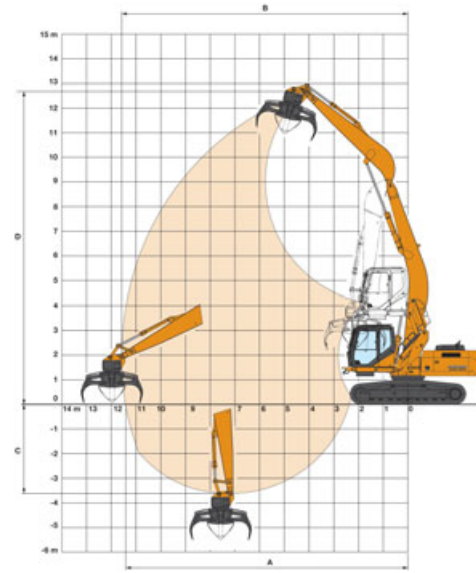
## SOUND LEVEL

External guaranteed sound level  
 (EU Directive 2000/14/EC) \_\_\_\_\_ LwA 102 dB(A)  
 Operator cab sound pressure level (ISO 6396) \_\_\_\_\_ LpA 70 dB(A)

## CIRCUIT AND COMPONENT CAPACITIES

Fuel tank (l) \_\_\_\_\_ 410  
 Hydraulic system (l) \_\_\_\_\_ 250  
 Hydraulic tank (l) \_\_\_\_\_ 147  
 Adblue tank (l) \_\_\_\_\_ 120

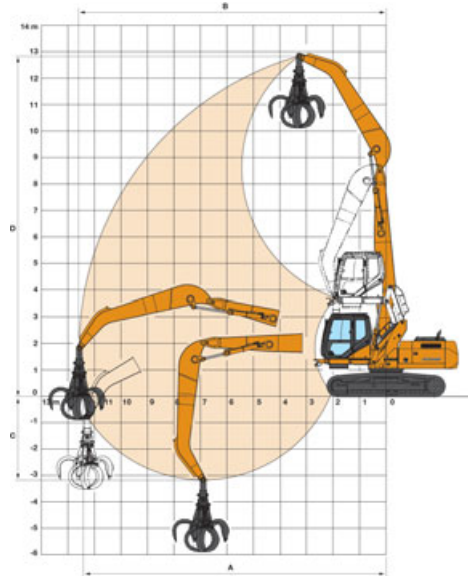
## PERFORMANCE DATA CX290D MH



Arm 5.0 m

	mm	
Boom length	7100	
A Maximum reach at GRP	11410	mm
B Maximum reach	11580	mm
C Maximum depth	3610	mm
D Maximum digging height	12680	mm

## PERFORMANCE DATA CX290D SL



Arm 5.80 m

	mm	
Boom length	7400	
A Maximum reach at GRP	12770	mm
B Maximum reach	12920	mm
C Maximum depth	3890	mm
D Maximum digging height	14420	mm

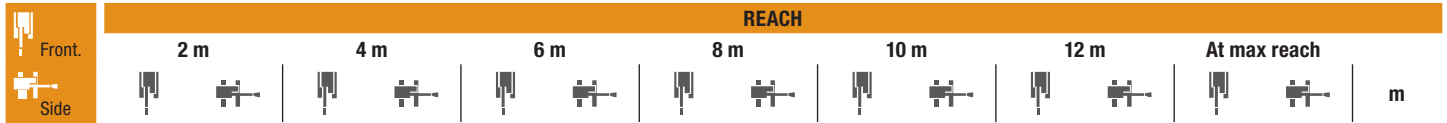
## WEIGHT

With operator, lubricant, coolant and full fuel tank, 600 mm grouser shoes, front attachment

	Weight	
CX290D MH	32800 kg	Counterweight 8150 kg
CX290D SL	32600 kg	

## TRANSPORT DIMENSIONS

	mm	CX290D MH	CX290D SL
Overall length (with attachment)	10230		10650
Overall height (to top of guardrail)	3360		3360
Undercarriage overall width (with 600 mm shoes)	3190		3190



**CX290D MH - Standard arm 5.0 m length, 600 mm shoes.**

12.0 m													5870*	5870*	5.63
10.0 m					7150*	7150*	5560*	5560*					4810*	4810*	8.27
8.0 m					7110*	7110*	6420*	6300					4450*	4380	9.85
6.0 m					7800*	7800*	6710*	6140	5990*	4240			4360*	3660	10.84
4.0 m	23890*	23890*	12680*	12680*	9080*	9080*	7290*	5850	5920	4110			4460*	3290	11.39
2.0 m			16350*	15120	10510*	8350	7930*	5510	5750	3940			4590	3120	11.58
0 m			7580*	7580*	11380*	7760	7720	5210	5590	3790			4610	3120	11.41
-2.0 m			7770*	7770*	11240*	7470	7530	5030	5500	3710			4910	3320	10.86

**CX290D SL - Standard arm 5.8 m length, 600 mm shoes.**

14.0 m			7510*	7510*									6640*	6640*	4.46
12.0 m					7590*	7590*	4730*	4730*					4600*	4600*	8.05
10.0 m							6380*	6380*	4190*	4190*			3960*	3960*	10.07
8.0 m					7080*	7080*	6350*	6350*	5820*	4500			3680*	3530	11.40
6.0 m					7770*	7770*	6690*	6320	5930*	4410	4510*	3210	3560*	3080	12.26
4.0 m			12290*	12290*	9010*	9010*	7280*	5990	6060	4240	4560	3150	3570*	2840	12.75
2.0 m			15910*	15300	10240*	8440	7920*	5600	5850	4040	4460	3060	3670*	2730	12.92
0 m			6400*	6400*	11320*	7770	7770	5260	5660	3860	4380	2980	3900*	2740	12.77
-2.0 m			6310*	6310*	11260*	7420	7540	5050	5540	3750			4450	3020	11.79

\* The above loads (kg) are compliant to the ISO standards and refer to the excavator equipped without bucket. The indicated loads are no more than 87% of hydraulic system lift capacity or 75% of static tipping load. Values marked with an asterisk (\*) are limited by the hydraulic lifting capacity.

**CNH INDUSTRIAL  
 DEUTSCHLAND GMBH**  
 CASE Baumaschinen  
 Benzstr. 1-3 - D-74076 Heilbronn  
 DEUTSCHLAND

**CNH INDUSTRIAL FRANCE, S.A.**  
 16-18 Rue des Rochettes  
 91150 Morigny-Champigny  
 FRANCE

**CNH INDUSTRIAL - UK**  
 First Floor, Barclay Court 2,  
 Heavens Walk,  
 Doncaster - DN4 5HZ  
 UNITED KINGDOM

**CNH INDUSTRIAL - SOUTH AFRICA**  
 Waterfall Business Park  
 Bekker Street, Howick Close  
 1685 Midrand - Johannesburg  
 REPUBLIC OF SOUTH AFRICA

**CNH INDUSTRIAL  
 MAQUINARIA SPAIN, S.A.**  
 Avda. José Gárate, 11  
 28823 Coslada (Madrid)  
 ESPAÑA

**CNH INDUSTRIAL ITALIA SPA**  
 Strada di Settimo, 323  
 10099 San Mauro Torinese (TO)  
 ITALIA

**CASE CUSTOMER CENTRE  
 PARIS**  
 RN 330 - Penchard  
 77122 - Monthyon  
 FRANCE

**CNH INDUSTRIAL - MIDDLE EAST**  
 DAFZA - Dubai Airport Free Zone  
 West Wing 4 B, Office 642  
 P.O. Box 54588, Dubai,  
 UNITED ARAB EMIRATES

**NOTE:** Standard and optional fittings can vary according to the demands and specific regulations of each country. The illustrations may include optional rather than standard fittings - consult your CASE dealer. Furthermore, CNH Industrial reserves the right to modify machine specifications without incurring any obligation relating to such changes.

Conforms to directive 2006/42/EC

**CASE**  
**00800-2273-7373**

The call is free from a land line.  
 Check in advance with your Mobile Operator if you will be charged. Toll free number not available from all calling areas.