

CASE

CONSTRUCTION

WHEEL LOADERS

621E-EXT-EXR



	621E	621EXT	621EXR
Engine Horsepower	128 kW/172 hp	128 kW/172 hp	128 kW/172 hp
Operating weight (max.)	12 431 kg	13 022 kg	12 521 kg
Bucket capacity	1.96 - 2.29 m ³	1.96 - 2.40 m ³	1.96 - 2.29 m ³

ERGONOMOMIC DESIGN

The E series cab is longer and wider with a 15 % increase in floor area and full height glazing, for maximum visibility around the machine. A fully adjustable operator seat and steering column, with standard single lever or dual lever loader controls, provides optimum comfort. Ergonomically designed switchgear and a central console improve ease of use. The cab door and right hand window can be opened 180° for improved cross cab ventilation, while increased air diffusers provide heating and ventilation for all year round comfort.

Premium cab. Optimum performance.

ECONOMICAL DRIVETRAIN

A Euro III compliant 6.7 litre engine powers the 621E, offering three power curve choices to boost productivity and ensure optimum economy in all conditions. Operator selectable maximum, standard, economy and auto working modes fine tune the machine's hydraulics to the application, providing high output for loading and digging duties, and low fuel consumption in lighter stocking operations. Auto mode automatically adjusts engine output to provide maximum tonne per litre performance.

High production. Low consumption.



EXEMPLARY ACCESS

Daily checks are easily carried out from ground level, with fluid sight gauges on all reservoirs. Electric lift engine canopy offers unrivalled access for service and maintenance, with a rear mounted engine. Remote fluid drains ensure environmentally-friendly service. High efficiency central cooling pack has independent coolers with removable air conditioning condenser and fast release inner fender for easy cleaning. Extended service intervals and reduced maintenance result in lower operating costs and higher uptime.

Ease of maintenance. Reduced downtime.

EXTENDED VIEW

An increased glass area, redesigned front wheel arches and a smooth single-piece engine canopy provide a clear view for the operator all around the machine, reducing the risk of accidents and improving safety on site. The exhaust stack is now mounted at the rear of the canopy, in line with the optional air pre-cleaner, to provide a clear view to the rear. Full height glazing to the front and sides of the cab provides an unobstructed view to the wheels and bucket tips.

Operator visibility. Improved safety.

EXTRA LOAD RETENTION

The optional Case Ride Control system reduces shock loading in the loader arms and bounce in the cab when travelling with a load. Auto mode automatically engages Ride Control at speeds over 4.8 km/h to maintain maximum load retention. In combination with 5 % wider rear track, Ride Control offers supreme ride comfort for the operator, reducing fatigue and boosting performance.

Increased load. Reduced effort.



EXCEPTIONAL FORCE

Sturdy Z-bar loader linkage design and larger lift cylinders result in superior breakout forces and 13 % increase in lift capacity, boosting productivity and reducing cycle times. Bucket mountings are interchangeable with D series, increasing fleet acceptance. Single loader control lever incorporates forward/reverse and transmission downshift buttons, while dual levers have additional controls at fingertips, reducing operator effort and increasing productivity.

Robust loader. Rapid bucket fill.

ENGINE



The 621E is powered by a Tier III Case 667TA/EDB diesel engine. This electronically-controlled 6.7 litre engine offers the operator a choice of three power and torque ratings, from 133-172 hp (99-128 kW), each designed to match the requirements of the machine in specific applications. This boosts productivity and reduces fuel consumption and exhaust emissions. In addition the machine has four Working Modes, which are selected by the operator: Standard mode is for use in normal operation, offering the engine's standard rated output with maximum hydraulic power and flow.

Max Power provides a 13.5 % power boost and is intended for extreme operating conditions. For lighter duties, there is Economy mode, which drops the engine revs and power output by 15 %, reducing fuel consumption, exhaust and noise emissions further. The final operating mode is Auto mode, which automatically matches the engine's power curve to the digging application. The electronic engine control also permits three idle settings, 600, 900 and 1,200 rpm, further reducing fuel consumption and exhaust emissions.

FRONT VISIBILITY



Case E Series wheeled loaders benefit from a greatly enlarged operator's cab, with up to 15 % more floor area. The tapered design is longer and wider than the D Series, offering more internal space for the driver and reduced noise levels that are among the quietest in the industry.

Floor to ceiling glass is present at the front and sides, offering unparalleled visibility to the wheels and the implement, increasing efficiency and productivity on site. Redesigned front wheel arches offer improved protection for the cab, while increasing the operator's view to the bucket.

REAR VISIBILITY



At the rear of the 621E, the sloping single-piece engine canopy provides industry-leading levels of visibility. The optional engine air pre-cleaner is positioned in line with the exhaust stack at the rear of the canopy to further improve visibility. A large single rear screen, with pillars level with the operator, ensures an unbroken view to the rear three-quarters of the 621E. This is essential for a wheeled loader operator in a stocking and loading operation, and also for the XT machine in a materials handling situation.

A rear windscreen wiper is standard, ensuring that the view to the rear of the machine stays clear whatever the weather, minimising downtime and maximising productivity.

OPERATOR'S CAB

The Case 621E uses the latest E series cab, which is longer and wider than on previous machines. This provides an exceptional working space, with a flat floor for ease of cleaning. Adjustable steering column and a fully adjustable driver's seat ensure that every operator can stay comfortable throughout the working shift.

The cab is among the quietest in the industry and features floor to roof glazing, for maximum visibility all around the machine. Easy to read analogue gauges combined with a digital display to provide all necessary information in a clear dash console. A full height door on the left hand side of the cab can be opened to 180° and locked in position for improved cross cab air flow. The window on the right of the cab can be opened slightly for increased air flow, or opened to 180° and locked for maximum ventilation. In addition full cab air-conditioning is available as an option, with numerous vents providing a good flow of air around the cab. There is plenty of storage in the cab, including a cool box when air conditioning is fitted.



RIDE CONTROL



Load retention and cab comfort can be further improved with the addition of optional Ride Control, a system that allows the lift arms to float when the machine is moving, preventing bounce in the cab and at the wheels. Ride Control permits higher travel speeds during load and carry operations, reducing fatigue for the operator and increasing productivity.

The system has three operating modes, off to allow full hydraulic power during loading and digging operations, on for reduced bounce while travelling and an automatic setting, which engages Ride Control when the machine accelerates above 4.8 km/h. The Ride Control system reduces shock loadings in the chassis and in the operator's cab, extending component life and reducing operating costs for the customer.

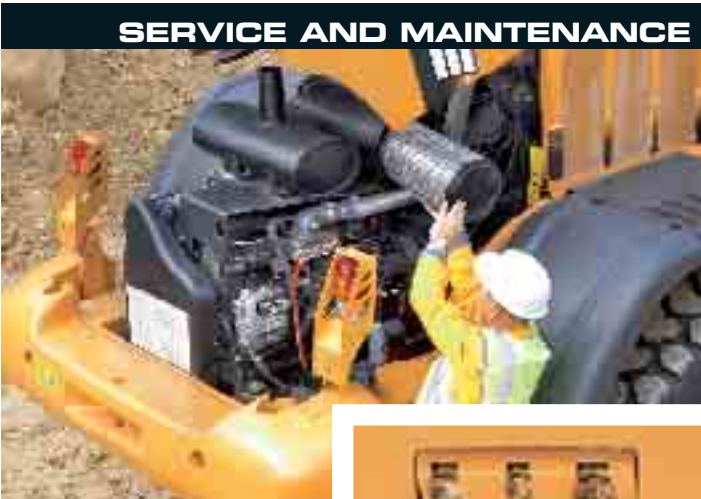
DRIVETRAIN



The 621E wheel loaders use a torque sensing autoshift transmission with four forward gears and three reverse ratios. Top forward speed is 38.6 km/h.

The operator can choose between manual or automatic control of the transmission. Forward and reverse shifting can be controlled using a shuttle switch in the head of the main hydraulic servo lever, or on the console within the operator's reach if the machine is equipped with multi-lever controls. This allows the operator to change direction while working the attachment lever, boosting productivity and cutting cycle times in loading operations. All four wheels are braked, using hydraulically-actuated maintenance-free wet disc brakes. Activating the transmission disconnect switch will electronically cut the drive to the wheels when applying the brakes, ensuring long brake life.

SERVICE AND MAINTENANCE



Thanks to the mid-mounted cooling module design, the engine sits at the rear of the machine, where it contributes to the counterweight. A single-piece electrically-operated engine cover lifts clear of the engine for service and maintenance, and all daily checks can be easily reached from ground level, with fluid sight gauges on all reservoirs.

There are remote fluid drain taps for the engine oil, coolant and hydraulic oil, ensuring environmentally-friendly service with no loss of fluids to the surrounding area. Grease points are centrally located, to reduce downtime and increase productivity. The machine's electronic control system can be accessed by trained service personnel for fault diagnosis and operating data. This system is fully compatible with the Case service tool. All of the machine's electronics are situated within the cab, providing a central location and keeping them away from dust and dirt.







SPECIFICATIONS

ENGINE

Model _____ Case Family IV,667TA/EDB, Tier III certified
 Type _____ 6 cyl, 4-stroke, turbocharged and air to air cooled
 Bore/Stroke _____ 104 x 132 mm
 Displacement _____ 6.7 l
 Fuel injection _____ Electronic
 Fuel filter _____ Replaceable, full flow spin-on cartridge
 Fuel cooler _____
 Air filter _____ Dry type element w/warning restriction indicator
 Pump operating angle ratings _____
 Side-to-side _____ Rated 35°
 Fore and aft _____ Rated 35°
 Oil filtration _____ Replaceable, full flow spin-on cartridge
 Horsepower - Peak _____
 Max Power _____
 Gross _____ 172 (128 kW) @ 1800 rpm
 Net _____ 162 (121 kW) @ 1800 rpm
 Standard Power _____
 Gross _____ 156 (116 kW) @ 1800 rpm
 Net _____ 146 (109 kW) @ 1800 rpm
 Economy Power _____
 Gross _____ 133 (99 kW) @ 1500 rpm
 Net _____ 125 (93 kW) @ 1500 rpm

NOTE: Gross horsepower and torque per SAE J1995.
 Net horsepower and torque per SAE J1349.

Torque - Peak _____
 Max Power _____
 Gross _____ 538 (730 kW) @ 1600 rpm
 Net _____ 510 (692 kW) @ 1600 rpm
 Standard Power _____
 Gross _____ 530 (719 kW) @ 1300 rpm
 Net _____ 508 (689 kW) @ 1000 rpm
 Economy Power _____
 Gross _____ 527 (715 kW) @ 1200 rpm
 Net _____ 508 (689 kW) @ 1200 rpm
 Torque rise _____ 33%

DRIVETRAIN

Transmission _____
 4F/3R Proportional w/Electronic Control
 Module torque sensing autoshift/manual shift and modulation
 Differential _____ Limited slip with 45% transfer
 on front and rear axles

Service brakes _____
 Hydraulically actuated, maintenance-free, multiple wet disc
 w/accumulator to all four wheels.

Parking brakes _____
 Spring-applied hydraulic release disc on transmission output
 shaft.

Travel speeds - km/h with 20.5x25 L3 Tires

	Forward	Reverse
1st	6.9	7.3
2nd	13.5	14.2
3rd	23.9	25.0
4th	38.6	NA

NOTE: Travel speeds at full engine throttle.

ELECTRICAL

Voltage _____ 24 Volts, negative ground
 Alternator _____ 65 amp
 Batteries _____ (2) 12 Volt

HYDRAULICS

Pump (steering/implement) _____
 Closed centered pressure/flow compensated
 Variable displacement _____ 171l/min @ 2000 rpm @ 24 822 kPa
 Loader control valve _____
 Loader auxiliary steering _____
 Filtration _____
 10-micron, full flow replaceable cartridges on return line,
 condition indicator light for filter

CYCLE TIME

Raise w/rated bucket load _____ 6.3 sec
 Dump w/rated bucket load: _____
 Z-Bar _____ 1.3 sec
 XT _____ 1.7 sec
 Lower (empty) _____
 Power down _____ 4.7 sec
 Float down _____ 4.6 sec

CAPACITIES

Fuel tank _____ 246 l
 Hydraulic system _____
 Total _____ 147.6 l
 Reservoir _____ 90.8 l
 Transmission _____
 Service with filter _____ 18.9 l
 Front and rear axle _____
 Front axle _____ 22.0 l
 Rear axle _____ 22.0 l
 Engine oil w/filter _____ 13.2 l
 Cooling system _____ 36.0 l

OPERATING WEIGHTS

Z-Bar

Unit equipped with ROPS cab with heater and A/C, full
 counterweight, 20.5R25 XTLA Michelin tires, front and rear
 fenders, 1.96 m³ general purpose loader bucket with edge, full
 fuel, 79 kg operator _____ 12 431 kg

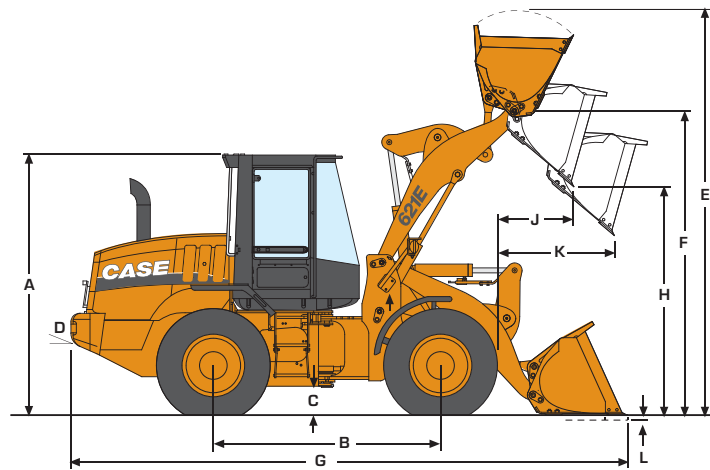
XT

Unit equipped with ROPS cab with heater and A/C, full
 counterweight, 20.5R25 XTLA Michelin tires, 1.96 m³ ACS
 loader bucket, standard batteries, full fuel,
 79 kg operator _____ 13 022 kg

XR

Unit equipped with ROPS cab with heater and A/C, full
 counterweight, 20.5R25 XTLA Michelin tires, front and rear
 fenders, 1.96 m³ general purpose loader bucket with edge,
 full fuel, 79 kg operator _____ 12 521 kg

GENERAL DIMENSIONS 621E



DIMENSIONS

A	Height to top of ROPS cab	mm	3395
B	Wheelbase	mm	2900
C	Ground clearance	mm	370
D	Angle of departure		32°
Width			
	- overall* w/o bucket	mm	2500
	- centerline tread	mm	1950
	Turning radius* - outside	mm	5245
Turning angle			
	- from center		40°
	- total angle		80°
	Rear axle oscillation [total]		24°

NOTE: *Dimensions taken with 20.5x25 L2/L3/XTLA TL tires.

WEIGHT ADJUSTMENTS

Select Options

Select Options	Weight Adj. (kg)	Tipping Load Adj. Straight (kg)	Tipping Load Adj. 40° Turn (kg)
20.5x25 12 ply L2 tires	- 45	- 35	- 30
20.5x25 12 ply L3 tires	104	78	69
20.5R25 XHA TL tires	172	131	116
Standard counterweight	- 387	- 927	- 777

NOTE: ** Unit equipped with Z-Bar loader arms, 1.96 m³ general purpose pin on bucket w/ bolt-on edge, 20.5R25 XTLA Michelin tires, ROPS cab with heater and A/C, full counterweight, standard batteries, front and rear fenders, full fuel and 79 kg operator. Adjust select options from rated weight.

PERFORMANCE DATA

621E Z-Bar*

		2.29 m ³ Bucket w/Bolt-on Edge	2.10 m ³ Bucket w/Bolt-on Edge	2.10 m ³ Bucket w/Teeth & segments	1.96 m ³ Bucket w/Bolt-on Edge	1.96 m ³ Bucket w/Teeth & segments
SAE bucket capacity - heaped	m ³	2.29	2.10	2.10	1.96	1.96
Bucket width - outside	mm	2602	2602	2602	2602	2602
Bucket weight	kg	885	842	872	813	843
E Operating height - fully raised w/spillguard	mm	5032	4955	4955	4927	4927
F Hinge pin height - fully raised	mm	3830	3830	3830	3830	3830
G Overall length - bucket level on ground	mm	7384	7316	7463	7241	7387
Dump angle - fully raised		55°	55°	55°	55°	55°
H Dump height - fully raised, 45° dump	mm	2801	2845	2749	2895	2799
J Bucket reach - fully raised, 45° dump	mm	1013	969	1071	919	1021
K Bucket reach - 2.13 m height, 45° dump	mm	1515	1493	1544	1467	1521
Operating load - ISO	kg	4499	4564	4544	4622	4602
Maximum material density - ISO	kg/m ³	1962	2171	2162	2362	2352
Tipping load - ISO						
- straight	kg	10339	10477	10437	10603	10564
- 40° turn	kg	8998	9129	9089	9244	9204
Lift capacity						
- full height	kg	7422	7468	7437	7499	7469
- maximum reach	kg	10484	10533	10502	10567	10536
- ground	kg	10360	11054	11033	11705	11688
Breakout force with tilt cylinder	kg	10546	11261	11232	12055	12026
Maximum rollback						
- ground		41°	40°	41°	40°	40°
- carry position		44°	44°	44°	44°	44°
- maximum reach		53°	53°	53°	53°	53°
- full height		55°	55°	55°	55°	55°
L Dig depth	mm	87	81	89	75	83
Maximum grading angle w/bucket - back dragging		61°	60°	62°	60°	61°
Loader clearance circle	mm	11549	11507	11595	11466	11551

NOTE:

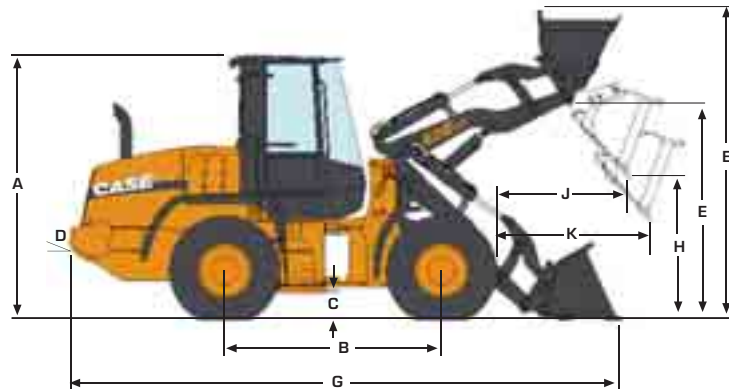
* Z-Bar performance data shown w/ full counterweight.

** XT lift arm with buckets for ACS Pro Series 2000® size 30 HD coupler.

*** XT lift arm with bucket for JRB 300HV coupler

Performance data unit equipped with 20.5R25 XTLA tires, ROPS cab w/ heater and A/C, full counterweight, standard batteries, front and rear fenders, full fuel and 79 kg operator. Specifications per SAE J732, J1234, J695, J742 and J818.

GENERAL DIMENSIONS 621E^{XT}



DIMENSIONS

A	Height to top of ROPS cab	mm	3395
B	Wheelbase	mm	2900
C	Ground clearance	mm	370
D	Angle of departure		32°
Width			
	- overall* w/o bucket	mm	2523
	- centerline tread	mm	1950
	Turning radius* - outside	mm	5245
Turning angle			
	- from center		40°
	- total angle		80°
	Rear axle oscillation (total)		24°

NOTE: *Dimensions taken with 20.5x25 L2/L3/XTLA TL tires.

WEIGHT ADJUSTMENTS

Select Options	Weight Adj. (kg)	Tipping Load Adj. Straight (kg)	Tipping Load Adj. 40° Turn (kg)
20.5x25 12 ply L2 tires	- 45	- 35	- 30
20.5x25 12 ply L3 tires	104	78	69
20.5R25 XHA TL tires	172	131	116
Standard counterweight	- 387	- 927	- 777

NOTE: **Unit equipped with Z-Bar loader arms, 1.96 m³ general purpose pin on bucket w/ bolt-on edge, 20.5R25 XTLA Michelin tires, ROPS cab with heater and A/C, full counterweight, standard batteries, front and rear fenders, full fuel and 79 kg operator. Adjust select options from rated weight.

PERFORMANCE DATA

621E^{XT}

		2.40 m ³ ACS Bucket w/Edge**	1.96 m ³ ACS Bucket w/Edge**	2.40 m ³ JRB Bucket w/Edge***	1.96 m ³ JRB Bucket w/Edge***	
E	Operating height - fully raised w/ spillguard	mm	5482	5347	5339	5327
F	Hinge pin height - fully raised	mm	3956	3956	3956	3957
G	Overall length - bucket level on ground	mm	7593	7468	7535	7640
	Dump angle - fully raised		55°	55°	55°	55°
H	Dump height - fully raised, 45° dump	mm	2792	2872	2825	2758
J	Bucket reach - fully raised, 45° dump	mm	1141	1141	1159	1239
K	Bucket reach - 2.13 m height, 45° dump	mm	1694	1692	1685	1728
	Operating load - ISO	kg	3826	3861	3205	3879
	Maximum material density - ISO	kg/m ³	1584	1899	1393	1908
	Tipping load - ISO					
	- straight	kg	8840	8931	7442	8967
	- 40° turn	kg	7652	7722	6409	7729
	Lift capacity					
	- full height	kg	6494	6462	5800	6522
	- maximum reach	kg	9254	9197	8664	9281
	- ground	kg	16389	16052	12698	16025
	Breakout force with tilt cylinder	kg	11021	12137	11658	10852
	Loader clearance circle	mm	11489	11438	11830	11515

NOTE:

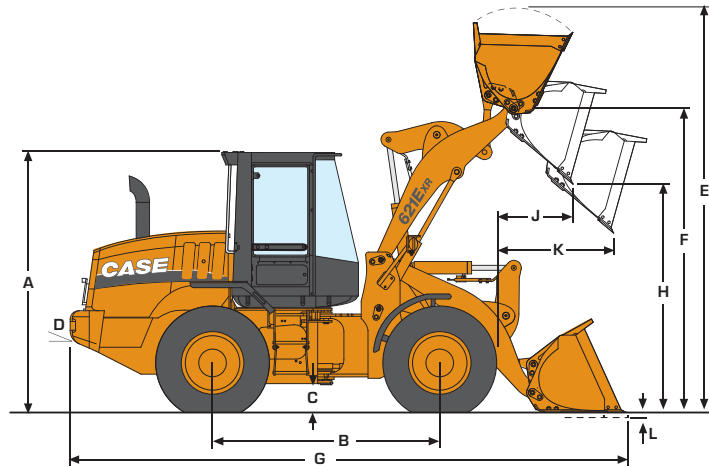
* Z-Bar performance data shown w/ full counterweight .

** XT lift arm with buckets for ACS Pro Series 2000® size 30 HD coupler.

*** XT lift arm with bucket for JRB 300HV coupler

Performance data unit equipped with 20.5R25 XTLA tires, ROPS cab w/ heater and A/C, full counterweight, standard batteries, front and rear fenders, full fuel and 79 kg operator. Specifications per SAE J732, J1234, J695, J742 and J818.

GENERAL DIMENSIONS 621E^{XR}



DIMENSIONS

A	Height to top of ROPS cab	mm	3395
B	Wheelbase	mm	2900
C	Ground clearance	mm	370
D	Angle of departure		32°
Width			
	- overall* w/o bucket	mm	2523
	- centerline tread	mm	1950
	Turning radius* - outside	mm	5245
Turning angle			
	- from center		40°
	- total angle		80°
	Rear axle oscillation (total)		24°

NOTE: *Dimensions taken with 20.5x25 L2/L3/XTLA TL tires.

WEIGHT ADJUSTMENTS

Select Options	Weight Adj. (kg)	Tipping Load Adj. Straight (kg)	Tipping Load Adj. 40° Turn (kg)
20.5x25 12 ply L2 tires	- 45	- 35	- 30
20.5x25 12 ply L3 tires	104	78	69
20.5R25 XHA TL tires	172	131	116
Standard counterweight	- 387	- 927	- 777

NOTE: ** Unit equipped with Z-Bar loader arms, 1.96 m³ general purpose pin on bucket w/ bolt-on edge, 20.5R25 XTLA Michelin tires, ROPS cab with heater and A/C, full counterweight, standard batteries, front and rear fenders, full fuel and 79 kg operator. Adjust: select options from rated weight.

PERFORMANCE DATA

621E^{XR}

		2.29 m ³ Bucket w/Bolt-on Edge	2.10 m ³ Bucket w/Bolt-on Edge	2.10 m ³ Bucket w/Teeth & segments	1.96 m ³ Bucket w/Bolt-on Edge	1.96 m ³ Bucket w/Teeth & segments
E	Operating height - fully raised w/spillguard	mm	5445	5368	5340	5340
F	Hinge pin height - fully raised	mm	4243	4243	4243	4243
G	Overall length - bucket level on ground	mm	7792	7725	7871	7796
	Dump angle - fully raised		50°	50°	50°	50°
H	Dump height - fully raised, 45° dump	mm	3214	3259	3162	3308
J	Bucket reach - fully raised, 45° dump	mm	1029	984	1086	934
K	Bucket reach - 2.13 m height, 45° dump	mm	1873	1850	1908	1880
	Operating load - ISO	kg	3669	3724	3705	3769
	Maximum material density - ISO	kg/m ³	1600	1772	1762	1926
	Tipping load - ISO					
	- straight	kg	8473	8587	8548	8684
	- 40° turn	kg	7338	7448	7409	7537
	Lift capacity					
	- full height	kg	7205	7249	7218	7279
	- maximum reach	kg	9308	9363	9331	9402
	- ground	kg	11409	11536	11504	11642
	Breakout force with tilt cylinder	kg	10852	11593	11553	12417
	Loader clearance circle	mm	11931	11887	11983	11836

NOTE:

* Z-Bar performance data shown w/ full counterweight .

** XT lift arm with buckets for ACS Pro Series 2000® size 30 HD coupler.

*** XT lift arm with bucket for JRB 300HV coupler

Performance data unit equipped with 20.5R25 XTLA tires, ROPS cab w/ heater and A/C, full counterweight, standard batteries, front and rear fenders, full fuel and 79 kg operator. Specifications per SAE J732, J1234, J695, J742 and J818.





621E-EXT-EXR

STANDARD EQUIPMENT & OPTIONS

STANDARD EQUIPMENT

Operator environment

- ROPS cab w/ heat
- Key start
- Articulated power steering w/tilt column
- Fully adjustable, suspension seat
- Foot throttle
- 1-Lever loader control w/wrist rest
- Cup holder
- Coat hook
- (1) Interior rearview mirror
- 2 in (51 mm) retractable seat belt
- Storage tray behind seat
- Cooled lunch box
- Single brake pedal
- F/N/R shuttle switch
- External rear view mirrors
- Lock box
- Pressurized air filtering
- Anti-glare window strip
- Defroster
- Side window, partial/fully open
- Dome light
- Wipers, rear and intermittent front
- Windshield washers, front and rear
- Rubber floor mat

Engine

- Case Family IV 667TA/EDB
- Tier III certified
- Selectable work modes
- Max power
- Auto power
- Standard power
- Economy power

- Turbocharger
- Charge air cooling
- Automatic fan belt tensioner
- Integral engine oil cooling
- Fuel filter with water trap
- Dual element air cleaner
- 65 amp alternator
- (2) 700 CCA 12-volt batteries
- Liquid-cooled radiator
- Non spark-arresting muffler
- Mid-mounted cooling module
- Common rail electronic fuel injection

Loader

- Z-bar loader linkage
- Single control for lift and tilt
- Positive hold float
- Automatic return-to-dig
- Automatic height control
- Automatic return-to-travel
- Brake pedal transmission disconnect
- Bucket position indicator on bucket

Drivetrain

- 4-wheel drive
- 4F/3R Selectable autoshift/manual shift transmission
- Electronic Control Module - Programmable, computer controlled proportional shifting with programmable gear selection
- Onboard diagnostics
- Single lever electronic shift control
- F/N/R switch in loader control handle
- Downshift button
- Torque converter
- Outboard planetary axles
- Limited-slip differentials
- Transmission oil cooler
- Brake pedal transmission disconnect

- Hydraulic wet disc brakes
- Spring-applied hydraulic release parking brake
- Limp-Home Mode
- Lubed-for-life drive shaft

Hydraulics

- Single lever 2-spool loader control valve
- Low-effort steering
- Hydraulic driven fan
- (8) Diagnostic quick couplers

Other

- Electric hood lift
- Front and rear fenders
- Lights:
 - (2) Front driving headlights (high/low beam)
 - (2) Front flood
 - (2) LED stop and tail lights
 - (2) Rear flood
- Front and rear turn signal/flash
- Standard counterweight
- Drawbar hitch
- Articulation locking bar
- Lift arm locking bar
- Lift and tie-down points - front/rear
- Backup alarm
- Remote drain points

OPTIONS

Operator's compartment

- Cloth-covered air-suspension seat
- Sound Shield noise suppression package
- Cab air-conditioning w/heater
- Radio
- Radio-ready (12 or 24-volt)
- Auxiliary power (12-volt)
- Cab convenience package

- RH steps and platform
- Rotating beacon
- Second brake pedal Engine
- Cold weather package
- Heavy-duty batteries
- Fuel heater
- Hydraulic oil cooler bypass
- Low temperature hydraulic oil
- Grid heater Loader
- Hydraulic attachment coupler
- Attachment auxiliary hydraulics
- Buckets (see page 3 & 4)
- Loader coupler systems
- XT Linkage Hydraulics
- Auxiliary hydraulics
- Ride Control
- Secondary steering
- 3 or 4-spool loader valves with 2 or 3-lever loader control
- Hydraulic reversing fan
- Hydraulic cooler

Tires

- 20.5-25 12 PR L3 bias (rock)
- 20.5 R25 radial (dirt/traction)
- 20.5 R25 radial (rock)

Other

- Special paint
- Full coverage fenders
- Belly pan
- Tool box
- Full counterweight - Z-Bar
- Temperature controlled fan

Standard and optional equipment shown can vary by country.

Worldwide Case Construction Equipment Contact Information

EUROPE/AFRICA/MIDDLE EAST:

Centre D'affaires EGB
5, Avenue Georges Bataille - BP 40401
60671 Le Plessis-Belleville - FRANCE

NORTH AMERICA/MEXICO:

700 State Street
Racine, WI 53404 U.S.A.

LATIN AMERICA:

Av. General David Sarnoff 2237
32210 - 900 Contagem - MG
Belo Horizonte BRAZIL

ASIA PACIFIC:

Unit 1 - 1 Foundation Place - Prospect
New South Wales - 2148 AUSTRALIA

CHINA:

No. 29, Industrial Premises, No. 376,
De Bao Road, Waigaoqiao Ftz, Pudong,
SHANGHAI, 200131, P.R.C.

NOTE: Standard and optional fittings can vary according to the demands and specific regulations of each country. The illustrations may include optional rather than standard fittings - consult your Case dealer. Furthermore, CNH reserves the right to modify machine specifications without incurring any obligation relating to such changes.

Case Construction Equipment

CNH UK Ltd.
Armstrong House
The Finningley Estate
Hayfield Lane
Doncaster
DN9 3XA
Fax +44 (0)1302 802126

www.casece.com

CASE
CONSTRUCTION



Conforms to directive 98/37/CE